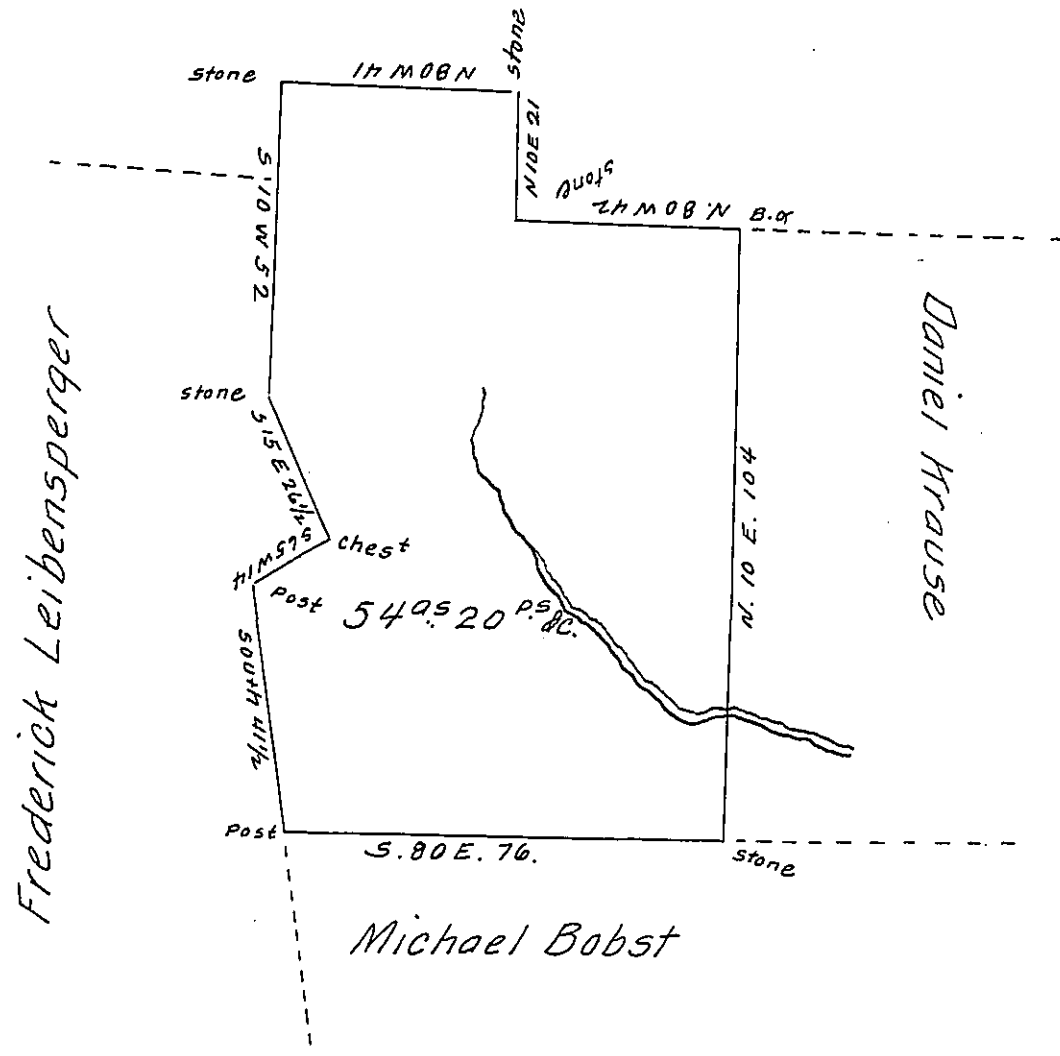


John Lichtenwalter



Draft of a tract of land situate in Weisenberg township Lehigh County.  
 Containing 54<sup>as</sup> 20<sup>ps</sup> and allowance. Surveyed the 16<sup>th</sup> day of June A. D.  
 1788. by George Palmer then D. S. in pursuance of a Warrant granted  
 to Daniel Suller dated Nov. 30<sup>th</sup> A. D. 1756. & Nov. Dec. 31<sup>st</sup> 1874 Returned  
 for Patenting.

I hereby certify that the foregoing is a correct copy of a Survey filed  
 amongst the records of the County Surveyor's office of this County and  
 that it has been examined by me and found to be correct.

To Rob<sup>t</sup> B. Beath Esq.  
 Surveyor General

Geo. Blank C. S.

IN TESTIMONY that the above is a copy of the original remaining on file in  
 the Department of Internal Affairs of Pennsylvania, made  
 conformably to an Act of Assembly approved the 16th day of  
 February 1833, I have hereunto set my hand and caused  
 the Seal of said Department to be affixed at Harrisburg,  
 this seventh day of February 1907.

*Isaac P. Brown*  
 Secretary of Internal Affairs.